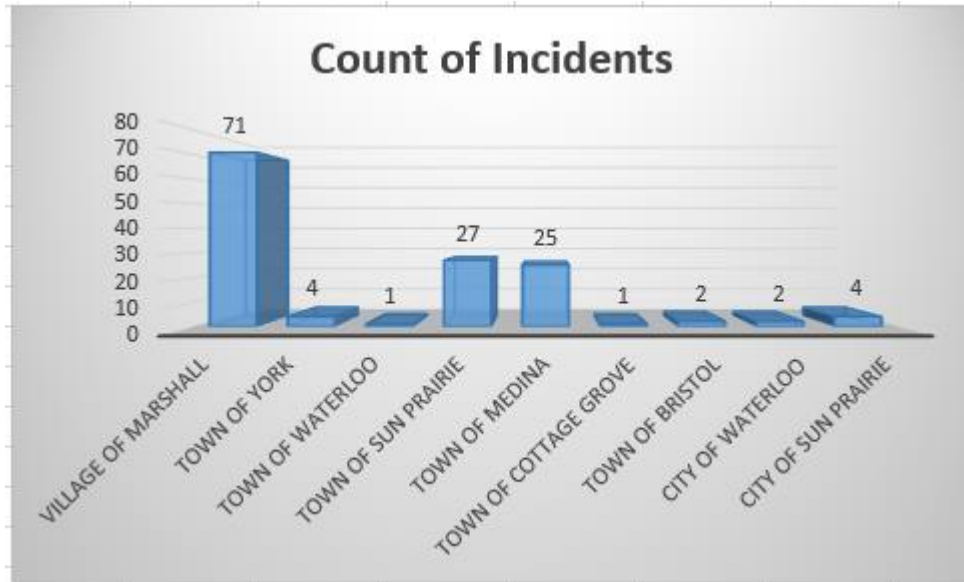
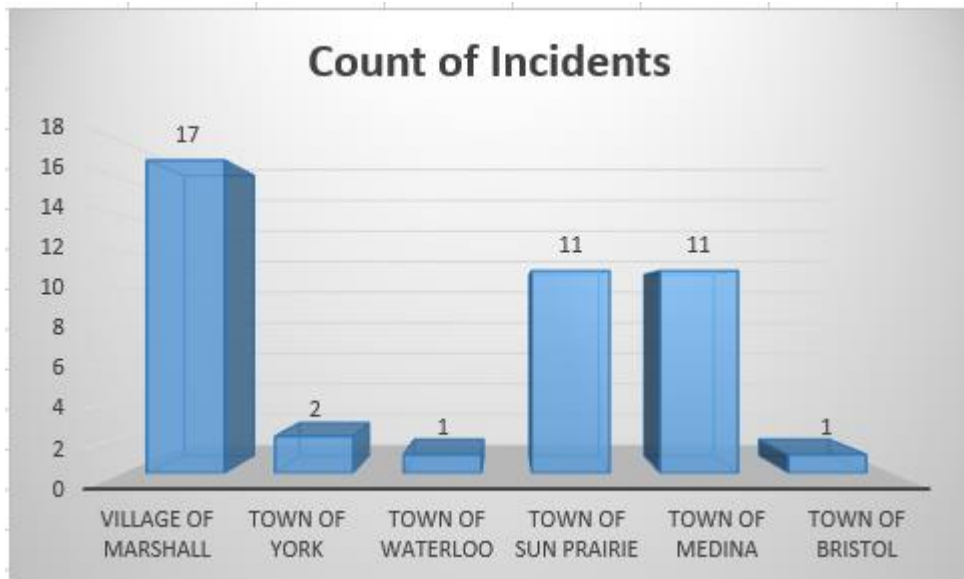


# Marshall Area EMS Director's Report April 2016

## Annual Call Volume by Municipality



## Monthly Call Volume by Municipality



### **Call Volume Year to Date (2016)**

*QA/QI, run reports per month*

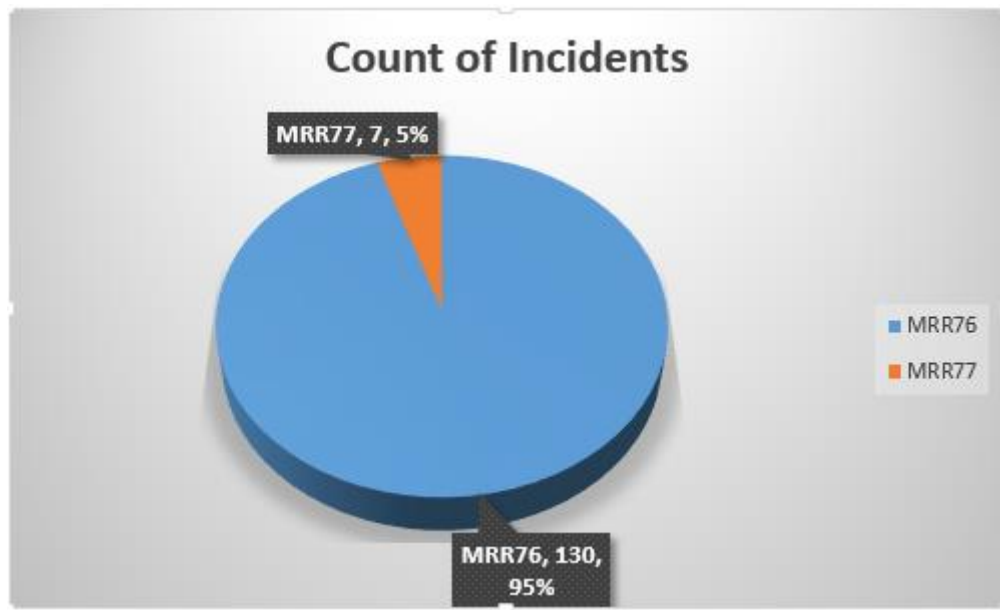
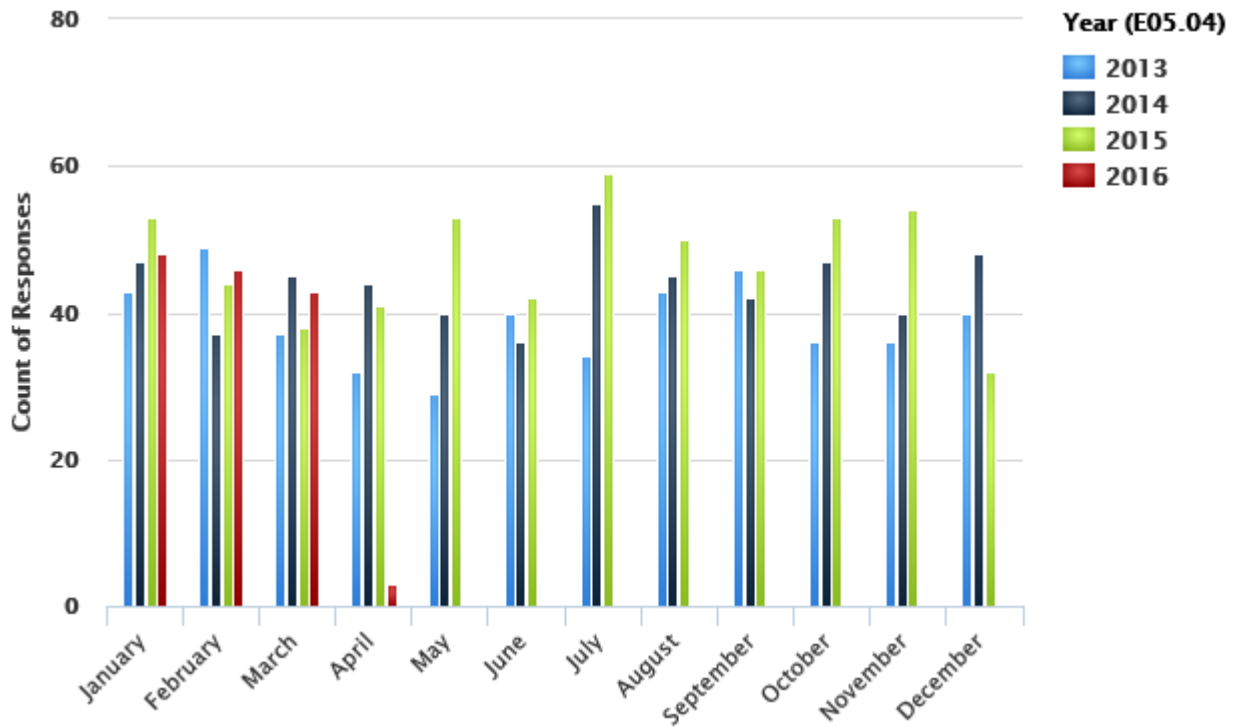
<b>Month</b>	<b># of Runs</b>	<b>% of Runs</b>
January	48	34.04%
February	46	32.62%
March	43	30.50%
April	4	2.84%
May	0	0.00%
June	0	0.00%
July	0	0.00%
August	0	0.00%
September	0	0.00%
October	0	0.00%
November	0	0.00%
December	0	0.00%
<b>Total</b>	<b>141</b>	<b>100%</b>

### **Call Volume Prior Year (2015)**

*QA/QI, run reports per month*

<b>Month</b>	<b># of Runs</b>	<b>% of Runs</b>
January	53	9.38%
February	44	7.79%
March	38	6.73%
April	41	7.26%
May	53	9.38%
June	42	7.43%
July	59	10.44%
August	50	8.85%
September	46	8.14%
October	53	9.38%
November	54	9.56%
December	32	5.66%
<b>Total</b>	<b>565</b>	<b>100%</b>

As of 03/31/2016 we were dispatched to 2 more calls than this period in 2015.



The backup ambulance has responded to three calls for service in 2016. We've missed three calls for service in (2016) where our first ambulance was already assigned to a call.

## Average Run Times for month

Call information, Ambulance Run Data Report – All calls

Enroute (Responding - Unit Notified Dispatched)			Response Time (Arrive Scene - Enroute)		
Minutes	# of Runs	% of Runs	Minutes	# of Runs	% of Runs
0 - 1	8	18.60%	0 - 5	22	51.16%
2 - 3	11	25.58%	6 - 10	11	25.58%
4 - 5	16	37.21%	11 - 15	7	16.28%
> 5	6	13.95%	> 15	0	0.00%
Unknown	2	4.65%	Unknown	3	6.98%
<b>Total</b>	<b>43</b>	<b>100%</b>	<b>Total</b>	<b>43</b>	<b>100%</b>

Scene Time (Depart Scene - Arrive Scene)			Transport Time (Arrive Hospital - Depart Scene)		
Minutes	# of Runs	% of Runs	Minutes	# of Runs	% of Runs
0 - 10	14	32.56%	0 - 5	0	0.00%
11 - 20	11	25.58%	6 - 10	0	0.00%
21 - 30	8	18.60%	11 - 15	0	0.00%
> 30	0	0.00%	> 15	33	76.74%
Unknown	10	23.26%	Unknown	10	23.26%
<b>Total</b>	<b>43</b>	<b>100%</b>	<b>Total</b>	<b>43</b>	<b>100%</b>

Average Run Times	
Enroute	00:03:42
To Scene	00:05:57
At Scene	00:13:20
To Destination	00:29:00
Back in Service	00:16:40
<b>Total</b>	<b>01:08:39</b>

## Annual Average Run Times

Call information, Ambulance Run Data Report – All calls

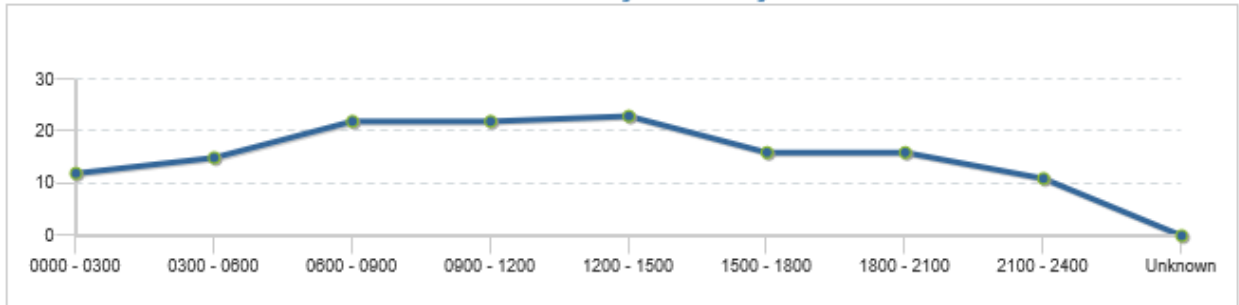
Enroute (Responding - Unit Notified Dispatched)			Response Time (Arrive Scene - Enroute)		
Minutes	# of Runs	% of Runs	Minutes	# of Runs	% of Runs
0 - 1	33	24.09%	0 - 5	88	64.23%
2 - 3	38	27.74%	6 - 10	30	21.90%
4 - 5	43	31.39%	11 - 15	11	8.03%
> 5	19	13.87%	> 15	1	0.73%
Unknown	4	2.92%	Unknown	7	5.11%
<b>Total</b>	<b>137</b>	<b>100%</b>	<b>Total</b>	<b>137</b>	<b>100%</b>

Scene Time (Depart Scene - Arrive Scene)			Transport Time (Arrive Hospital - Depart Scene)		
Minutes	# of Runs	% of Runs	Minutes	# of Runs	% of Runs
0 - 10	25	18.25%	0 - 5	1	0.73%
11 - 20	52	37.96%	6 - 10	5	3.65%
21 - 30	17	12.41%	11 - 15	1	0.73%
> 30	5	3.65%	> 15	84	61.31%
Unknown	38	27.74%	Unknown	46	33.58%
<b>Total</b>	<b>137</b>	<b>100%</b>	<b>Total</b>	<b>137</b>	<b>100%</b>

Average Run Times	
Enroute	00:03:20
To Scene	00:05:05
At Scene	00:16:30
To Destination	00:26:35
Back in Service	00:16:15
<b>Total</b>	<b>01:07:45</b>

## Year to Date Call Volume by Hour of Day

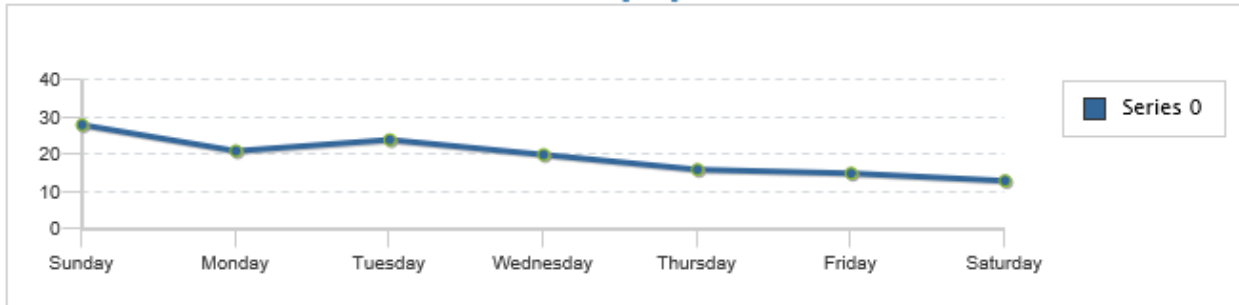
Call Information, Ambulance Run Data Report



Time Period	Sunday	Monday	Tuesday	Wednesday	Thursday	Friday	Saturday	Total	Percentage
0000 - 0300	2	0	3	2	1	2	2	12	8.76%
0300 - 0600	2	4	2	3	1	2	1	15	10.95%
0600 - 0900	2	2	6	4	6	2	0	22	16.06%
0900 - 1200	4	4	6	4	0	2	2	22	16.06%
1200 - 1500	8	2	3	1	5	2	2	23	16.79%
1500 - 1800	3	4	2	2	1	1	3	16	11.68%
1800 - 2100	6	2	1	4	0	2	1	16	11.68%
2100 - 2400	1	3	1	0	2	2	2	11	8.03%
Unknown	0	0	0	0	0	0	0	0	0.00%
<b>Total</b>	<b>28</b>	<b>21</b>	<b>24</b>	<b>20</b>	<b>16</b>	<b>15</b>	<b>13</b>	<b>137</b>	<b>100%</b>

## Year to Date Calls by Weekday

Call information, ambulance run data report, Runs per weekday



## Transport Hospital

Call information, Ambulance Run Data

Destination	# of Runs	% of Runs
Columbus Community Hospital	5	3.65%
Meriter Hospital	8	5.84%
St. Mary's - Madison	28	20.44%
St. Mary's - Sun Prairie	11	8.03%
Stoughton Hospital	1	0.73%
Univ of Wis Hospital & Clinics	25	18.25%
UW Hospital - East	9	6.57%
VA Medical Center	2	1.46%
No Destination	48	35.04%
<b>Total</b>	<b>137</b>	<b>100%</b>

## Year to Date Dispatch Reasons

*Call information, Ambulance Run Data*

Dispatch Reason	# of Times	% of Times
Abdominal Pain	1	0.73%
Allergies (Reaction, Stings, Bites)	1	0.73%
Assault/Sexual Assault	1	0.73%
Back Pain (Non-Traumatic/Non-Recent Trauma)	1	0.73%
Breathing Problem	12	8.76%
Cardiac or Respiratory Arrest/Death	2	1.46%
Chest Pain (Non-Traumatic)	8	5.84%
Convulsions/Seizure	3	2.19%
Diabetic Problems	1	0.73%
Falls	24	17.52%
Headache	1	0.73%
Heart Problems/A.I.C.D.	1	0.73%
Hemorrhage/Laceration	3	2.19%
Overdose	1	0.73%
Overdose/Poisoning (Ingestion)	1	0.73%
Psychiatric/Abnormal Behavior/Suicide Attempt	2	1.46%
Sick Person (Specific Diagnosis)	19	13.87%
Standby	14	10.22%
Stroke (CVA)	2	1.46%
Traffic/Transportation Incidents	25	18.25%
Traumatic Injuries (Specific)	3	2.19%
Unconscious/Fainting (Near)	6	4.38%
Unknown Problem (Man Down)	5	3.65%
Unknown	0	0.00%
<b>Total</b>	<b>137</b>	<b>100%</b>

## Year to Date Call Disposition

*Call information, Ambulance Run Data Report*

Response Disposition	# of Times	% of Times
Cancelled	9	6.57%
Dead at Scene	1	0.73%
Patient Refused Care	13	9.49%
Standby Only, No Patient Contacts	7	5.11%
Treated and Refused Transport	19	13.87%
Treated and Released	2	1.46%
Treated, Transferred Care	2	1.46%
Treated, Transported by EMS	84	61.31%
Unknown	0	0.00%
<b>Total</b>	<b>137</b>	<b>100%</b>