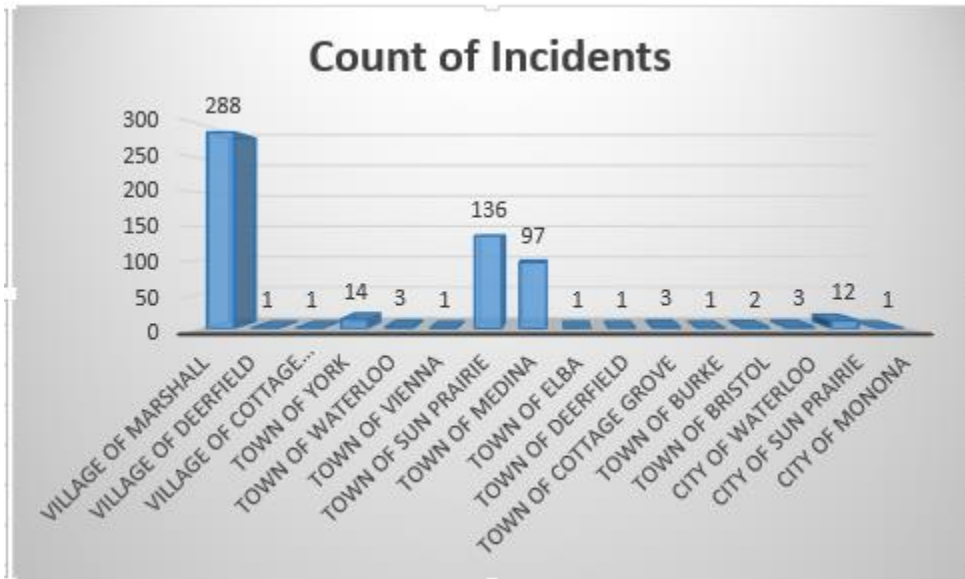
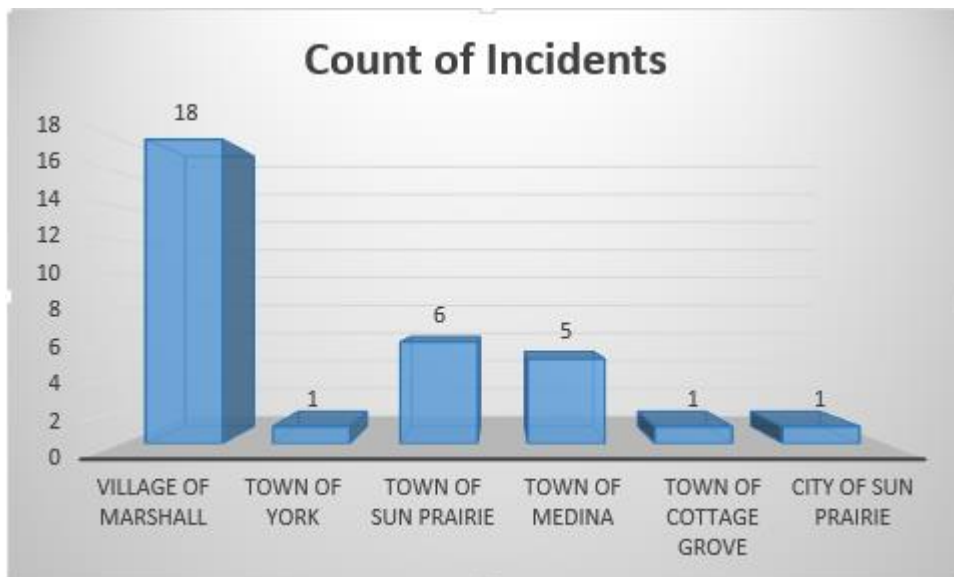


Marshall Area EMS Director's Report January 2016

Annual Call Volume by Municipality



Monthly Call Volume by Municipality



Call Volume Year to Date (2015)

QA/QI, run reports per month

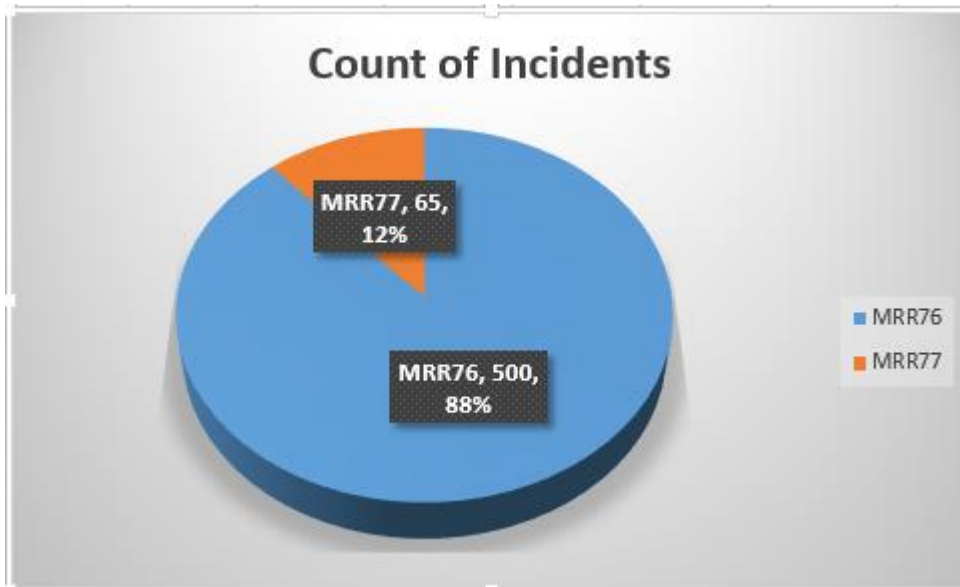
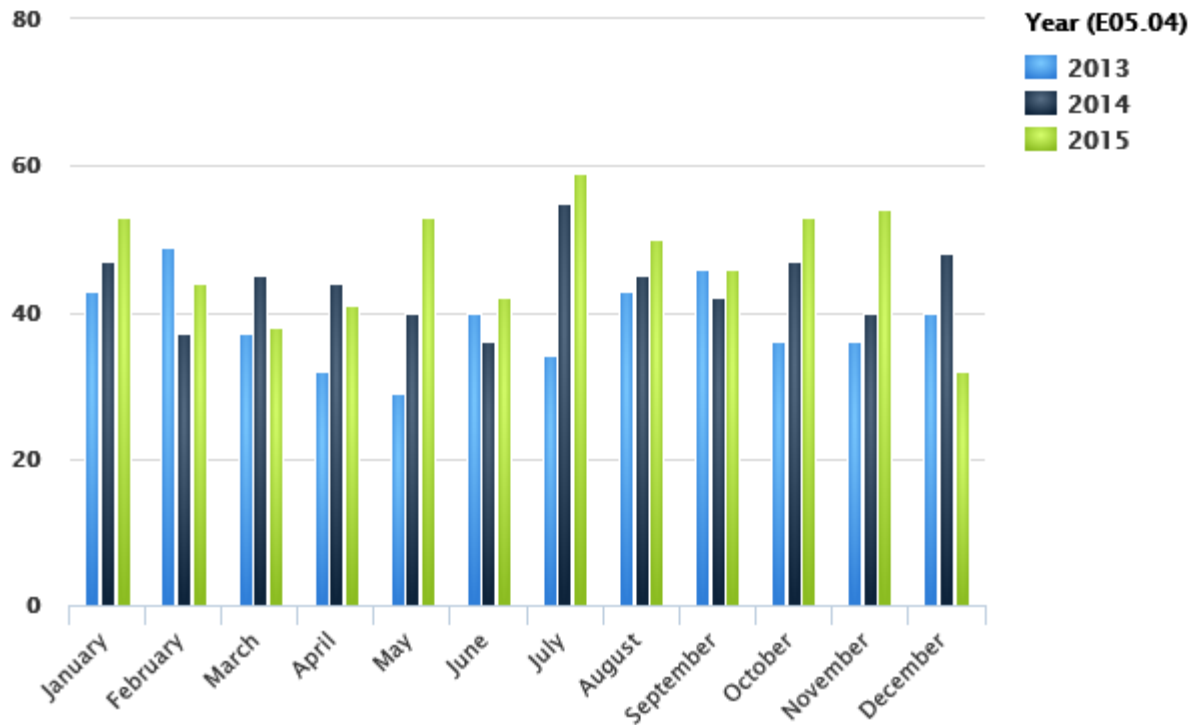
Month	# of Runs	% of Runs
January	53	9.38%
February	44	7.79%
March	38	6.73%
April	41	7.26%
May	53	9.38%
June	42	7.43%
July	59	10.44%
August	50	8.85%
September	46	8.14%
October	53	9.38%
November	54	9.56%
December	32	5.66%
Total	565	100%

Call Volume Prior Year (2014)

QA/QI, run reports per month

Month	# of Runs	% of Runs
January	47	8.94%
February	37	7.03%
March	45	8.56%
April	44	8.37%
May	40	7.60%
June	36	6.84%
July	55	10.46%
August	45	8.56%
September	42	7.98%
October	47	8.94%
November	40	7.60%
December	48	9.13%
Total	526	100%

As of 12/31/2015 we were dispatched to 39 more calls than this period in 2014.



The backup ambulance has responded to eight calls for service in 2015. We missed 24 calls for service year in (2015) where our first ambulance was already assigned to a call.

Average Run Times for month

Call information, Ambulance Run Data Report – All calls

Enroute (Responding - Unit Notified Dispatched)			Response Time (Arrive Scene - Enroute)		
Minutes	# of Runs	% of Runs	Minutes	# of Runs	% of Runs
0 - 1	3	9.38%	0 - 5	22	68.75%
2 - 3	14	43.75%	6 - 10	6	18.75%
4 - 5	8	25.00%	11 - 15	2	6.25%
> 5	6	18.75%	> 15	0	0.00%
Unknown	1	3.13%	Unknown	2	6.25%
Total	32	100%	Total	32	100%

Scene Time (Depart Scene - Arrive Scene)			Transport Time (Arrive Hospital - Depart Scene)		
Minutes	# of Runs	% of Runs	Minutes	# of Runs	% of Runs
0 - 10	9	28.13%	0 - 5	1	3.13%
11 - 20	12	37.50%	6 - 10	0	0.00%
21 - 30	4	12.50%	11 - 15	2	6.25%
> 30	1	3.13%	> 15	21	65.63%
Unknown	6	18.75%	Unknown	8	25.00%
Total	32	100%	Total	32	100%

Average Run Times	
Enroute	00:03:41
To Scene	00:04:18
At Scene	00:14:28
To Destination	00:26:13
Back in Service	00:15:08
Total	01:03:48

Annual Average Run Times

Call information, Ambulance Run Data Report – All calls

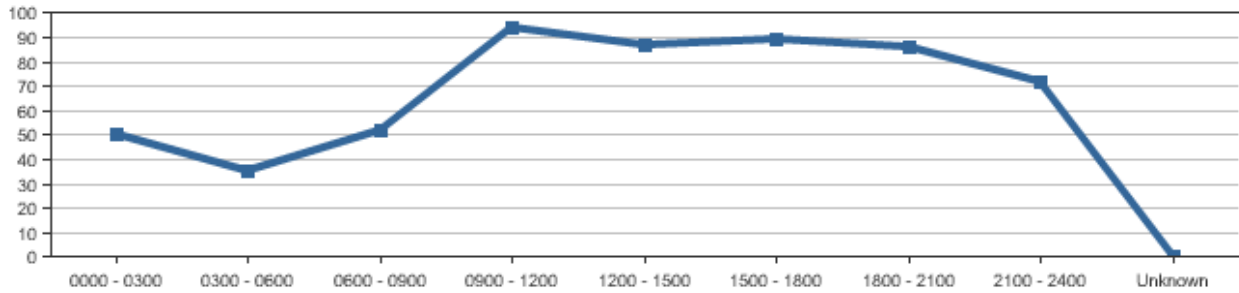
Enroute (Responding - Unit Notified Dispatched)			Response Time (Arrive Scene - Enroute)		
Minutes	# of Runs	% of Runs	Minutes	# of Runs	% of Runs
0 - 1	97	17.17%	0 - 5	342	60.53%
2 - 3	196	34.69%	6 - 10	123	21.77%
4 - 5	191	33.81%	11 - 15	45	7.96%
> 5	72	12.74%	> 15	6	1.06%
Unknown	9	1.59%	Unknown	49	8.67%
Total	565	100%	Total	565	100%

Scene Time (Depart Scene - Arrive Scene)			Transport Time (Arrive Hospital - Depart Scene)		
Minutes	# of Runs	% of Runs	Minutes	# of Runs	% of Runs
0 - 10	138	24.42%	0 - 5	2	0.35%
11 - 20	163	28.85%	6 - 10	6	1.06%
21 - 30	52	9.20%	11 - 15	19	3.36%
> 30	25	4.42%	> 15	304	53.81%
Unknown	187	33.10%	Unknown	234	41.42%
Total	565	100%	Total	565	100%

Average Run Times	
Enroute	00:03:23
To Scene	00:04:56
At Scene	00:15:48
To Destination	00:25:51
Back in Service	00:14:48
Total	01:04:46

Year to Date Call Volume by Hour of Day

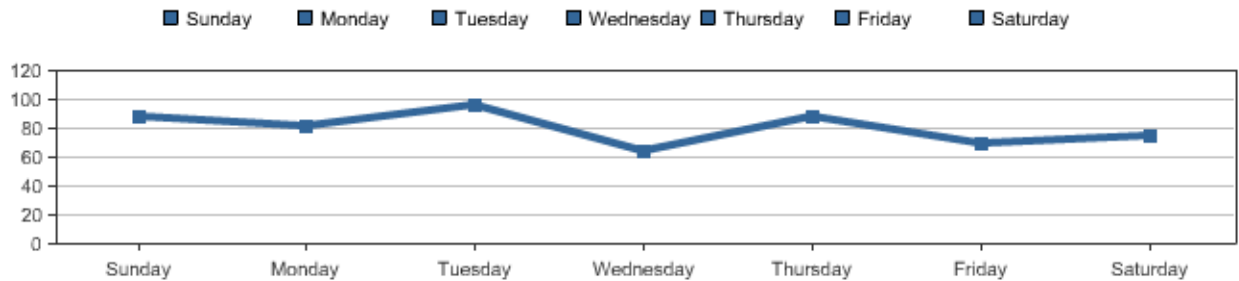
Call Information, Ambulance Run Data Report



Time Period	Sunday	Monday	Tuesday	Wednesday	Thursday	Friday	Saturday	Total	Percentage
0000 - 0300	14	4	7	3	8	6	8	50	8.85%
0300 - 0600	8	5	4	2	9	3	4	35	6.19%
0600 - 0900	2	11	12	9	4	5	9	52	9.20%
0900 - 1200	15	17	19	7	13	9	14	94	16.64%
1200 - 1500	18	8	20	7	10	12	12	87	15.40%
1500 - 1800	13	17	9	15	16	12	7	89	15.75%
1800 - 2100	13	11	15	10	18	10	9	86	15.22%
2100 - 2400	5	9	10	12	11	13	12	72	12.74%
Unknown	0	0	0	0	0	0	0	0	0.00%
Total	88	82	96	65	89	70	75	565	100%

Year to Date Calls by Weekday

Call information, ambulance run data report, Runs per weekday



Transport Hospital

Call information, Ambulance Run Data Report

Destination	# of Runs	% of Runs
Aurora Medical Center	2	0.35%
Beaver Dam Community Hospital	1	0.18%
Columbus Community Hospital	27	4.78%
Fort Healthcare	1	0.18%
Meriter Hospital	60	10.62%
Not Applicable	1	0.18%
St. Mary's - Madison	97	17.17%
St. Mary's - Sun Prairie	57	10.09%
Univ of Wis Hospital & Clinics	21	3.72%
University of Wisconsin Hospital & Clinics	50	8.85%
UW Hospital - East	10	1.77%
VA Medical Center	14	2.48%
Watertown Regional Medical Center	3	0.53%
No Destination	221	39.12%
Total	565	100%

Year to Date Dispatch Reasons

Call information, Ambulance Run Data

Dispatch Reason	# of Times	% of Times
Abdominal Pain	9	1.59%
Allergies (Reaction, Stings, Bites)	5	0.88%
Assault/Sexual Assault	8	1.42%
Back Pain (Non-Traumatic/Non-Recent Trauma)	3	0.53%
Breathing Problem	42	7.43%
Carbon Monoxide/Inhalation/Hazmat/CBRN	2	0.35%
Cardiac or Respiratory Arrest/Death	8	1.42%
Chest Pain (Non-Traumatic)	36	6.37%
Choking	3	0.53%
Convulsions/Seizure	23	4.07%
Diabetic Problems	18	3.19%
Eye Problems/Injury	1	0.18%
Falls	87	15.40%
Headache	3	0.53%
Heart Problems/A.I.C.D.	4	0.71%
Heat/Cold Exposure	1	0.18%
Hemorrhage/Laceration	18	3.19%
Overdose	12	2.12%
Overdose/Poisoning (Ingestion)	6	1.06%
Pregnancy/Childbirth/Miscarriage	1	0.18%
Psychiatric/Abnormal Behavior/Suicide Attempt	4	0.71%
Sick Person (Specific Diagnosis)	72	12.74%
Stab/Gunshot/Penetrating Trauma	1	0.18%
Standby	49	8.67%
Stroke (CVA)	10	1.77%
Traffic/Transportation Incidents	80	14.16%
Traumatic Injuries (Specific)	16	2.83%
Unconscious/Fainting (Near)	24	4.25%
Unknown Problem (Man Down)	19	3.36%
Unknown	0	0.00%
Total	565	100%

Year to Date Call Disposition

Call information, Ambulance Run Data Report

Response Disposition	# of Times	% of Times
Cancelled	57	10.09%
Dead at Scene	5	0.88%
Good Intent	2	0.35%
Patient Refused Care	19	3.36%
Standby Only, No Patient Contacts	25	4.42%
Treated and Refused Transport	75	13.27%
Treated and Released	24	4.25%
Treated, Dead at Scene	5	0.88%
Treated, Transferred Care	30	5.31%
Treated, Transported by EMS	312	55.22%
Treated, Transported by Law Enforcement	5	0.88%
Unable to Locate Patient/Scene	6	1.06%
Unknown	0	0.00%
Total	565	100%