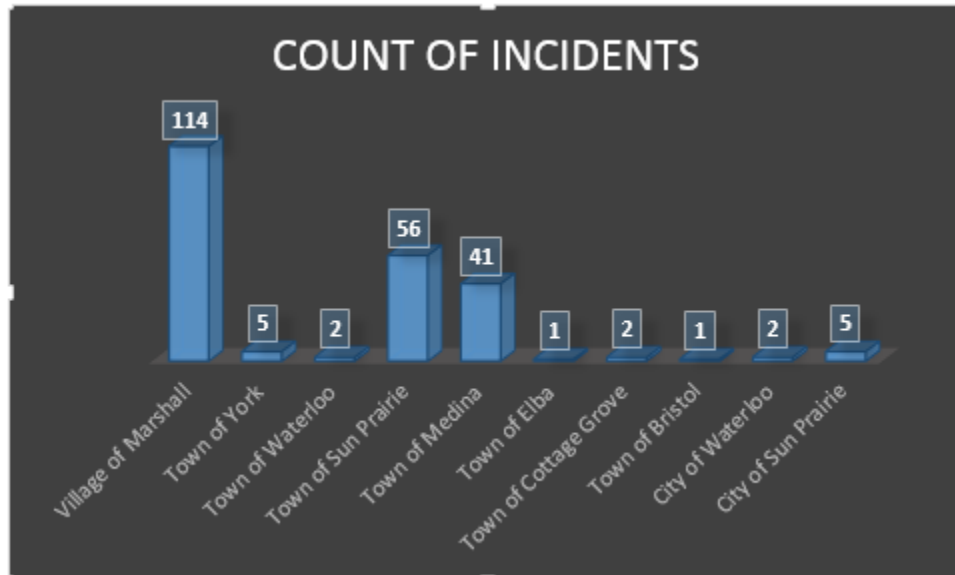
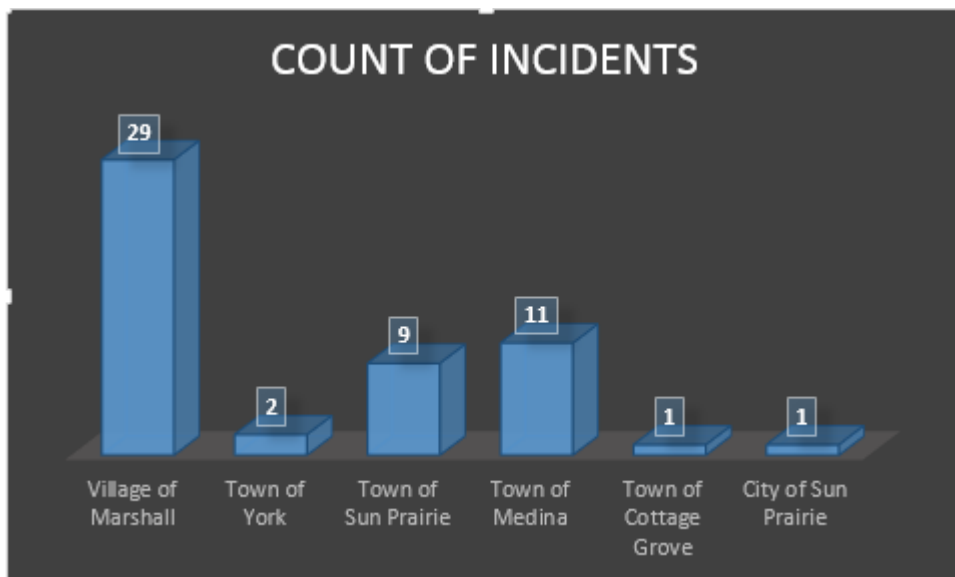


Marshall Area EMS Director's Report June 2015
Annual Call Volume by Municipality



Monthly Call Volume by Municipality



Call Volume Year to Date (2015)

QA/QI, run reports per month

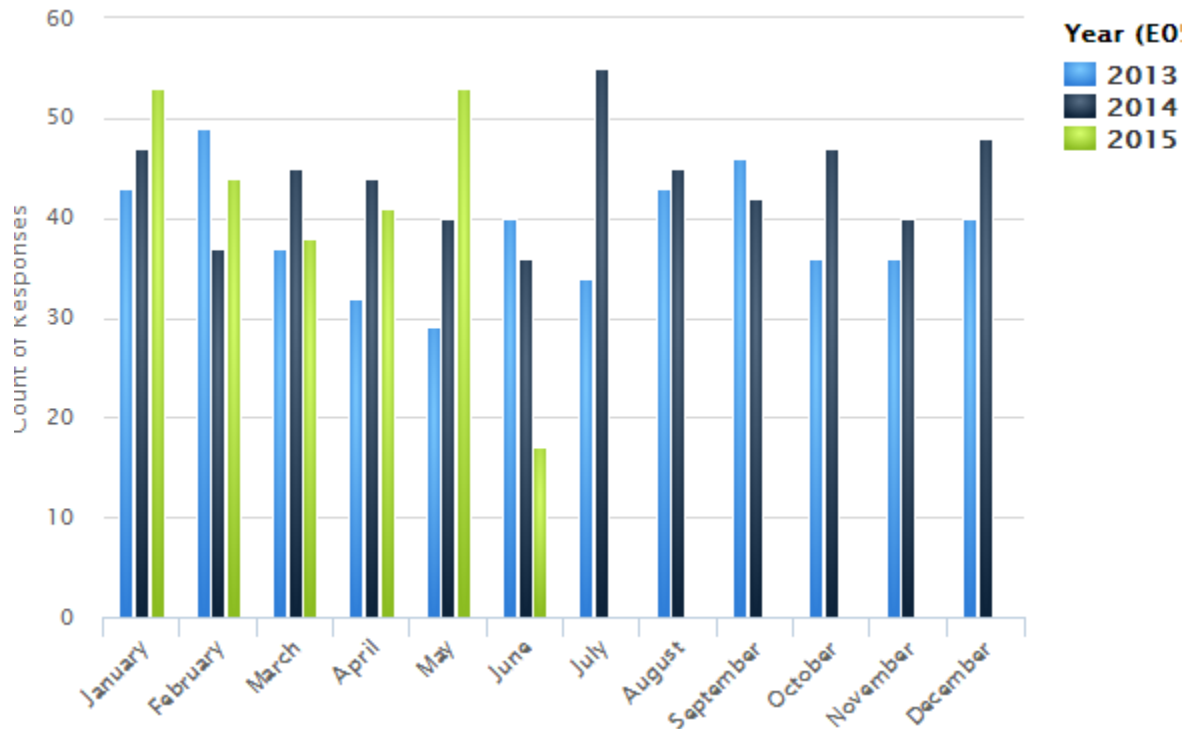
Month	# of Runs	% of Runs
January	53	21.99%
February	44	18.26%
March	38	15.77%
April	41	17.01%
May	53	21.99%
June	12	4.98%
July	0	0.00%
August	0	0.00%
September	0	0.00%
October	0	0.00%
November	0	0.00%
December	0	0.00%
Total	241	100%

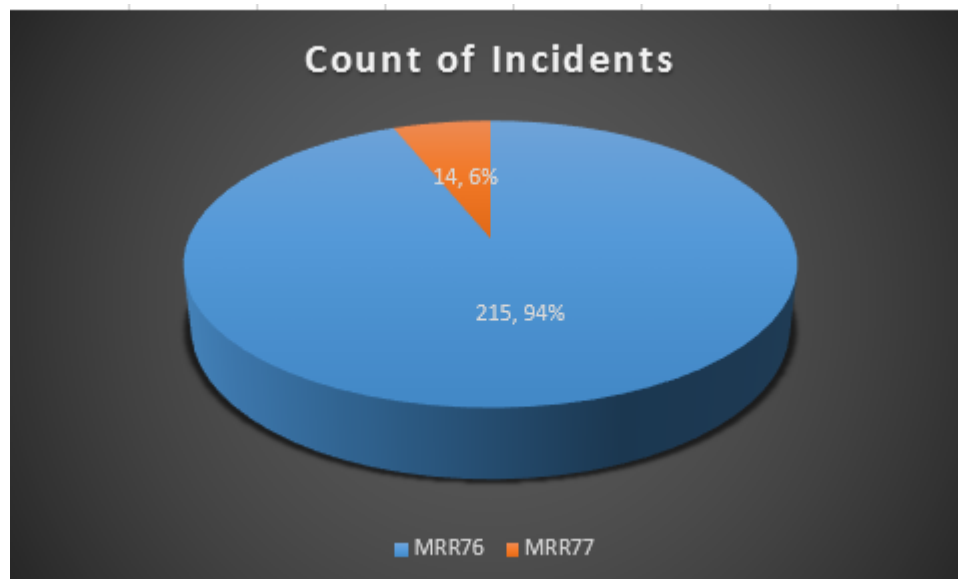
Call Volume Prior Year (2014)

QA/QI, run reports per month

Month	# of Runs	% of Runs
January	47	8.94%
February	37	7.03%
March	45	8.56%
April	44	8.37%
May	40	7.60%
June	36	6.84%
July	55	10.46%
August	45	8.56%
September	42	7.98%
October	47	8.94%
November	40	7.60%
December	48	9.13%
Total	526	100%

As of 05/31/2015 we were dispatched to 16 more calls than this period in 2014.





The backup ambulance has responded to three calls for service in 2015. It should also be noted that we've missed 6 calls for service year in (2015) where our first ambulance was already assigned to a call.

Average Run Times for month

Call information, Ambulance Run Data Report – All calls

Enroute (Responding - Unit Notified Dispatched)			Response Time (Arrive Scene - Enroute)		
Minutes	# of Runs	% of Runs	Minutes	# of Runs	% of Runs
0 - 1	17	32.08%	0 - 5	37	69.81%
2 - 3	19	35.85%	6 - 10	9	16.98%
4 - 5	13	24.53%	11 - 15	5	9.43%
> 5	4	7.55%	> 15	0	0.00%
Unknown	0	0.00%	Unknown	2	3.77%
Total	53	100%	Total	53	100%

Scene Time (Depart Scene - Arrive Scene)			Transport Time (Arrive Hospital - Depart Scene)		
Minutes	# of Runs	% of Runs	Minutes	# of Runs	% of Runs
0 - 10	17	32.08%	0 - 5	0	0.00%
11 - 20	17	32.08%	6 - 10	0	0.00%
21 - 30	5	9.43%	11 - 15	2	3.77%
> 30	3	5.66%	> 15	37	69.81%
Unknown	11	20.75%	Unknown	14	26.42%
Total	53	100%	Total	53	100%

Average Run Times	
Enroute	00:02:38
To Scene	00:04:38
At Scene	00:15:07
To Destination	00:25:25
Back in Service	00:13:26
Total	01:01:14

Annual Average Run Times

Call information, Ambulance Run Data Report – All calls

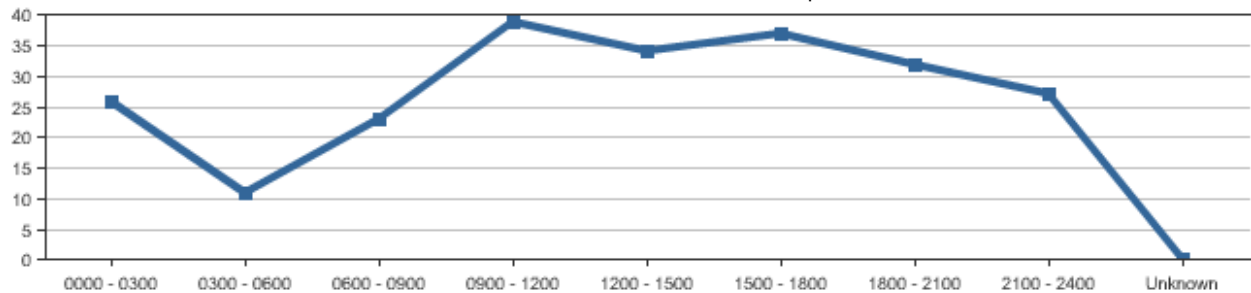
Enroute (Responding - Unit Notified Dispatched)			Response Time (Arrive Scene - Enroute)		
Minutes	# of Runs	% of Runs	Minutes	# of Runs	% of Runs
0 - 1	47	20.52%	0 - 5	131	57.21%
2 - 3	80	34.93%	6 - 10	55	24.02%
4 - 5	72	31.44%	11 - 15	16	6.99%
> 5	25	10.92%	> 15	3	1.31%
Unknown	5	2.18%	Unknown	24	10.48%
Total	229	100%	Total	229	100%

Scene Time (Depart Scene - Arrive Scene)			Transport Time (Arrive Hospital - Depart Scene)		
Minutes	# of Runs	% of Runs	Minutes	# of Runs	% of Runs
0 - 10	57	24.89%	0 - 5	1	0.44%
11 - 20	60	26.20%	6 - 10	1	0.44%
21 - 30	25	10.92%	11 - 15	5	2.18%
> 30	10	4.37%	> 15	130	56.77%
Unknown	77	33.62%	Unknown	92	40.17%
Total	229	100%	Total	229	100%

Average Run Times	
Enroute	00:03:12
To Scene	00:05:12
At Scene	00:16:09
To Destination	00:26:12
Back in Service	00:14:29
Total	01:05:14

Year to Date Call Volume by Hour of Day

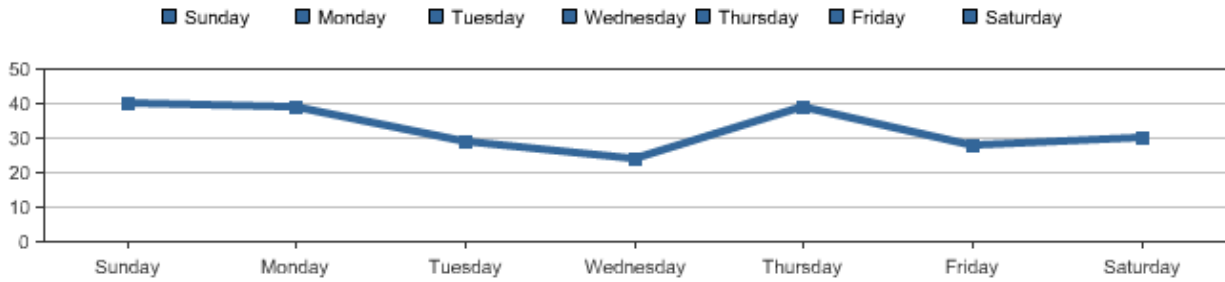
Call Information, Ambulance Run Data Report



Time Period	Sunday	Monday	Tuesday	Wednesday	Thursday	Friday	Saturday	Total	Percentage
0000 - 0300	11	2	1	2	3	3	4	26	11.35%
0300 - 0600	2	2	1	0	3	2	1	11	4.80%
0600 - 0900	2	4	5	4	3	1	4	23	10.04%
0900 - 1200	7	7	7	3	5	4	6	39	17.03%
1200 - 1500	6	1	5	2	8	6	6	34	14.85%
1500 - 1800	6	11	2	6	7	2	3	37	16.16%
1800 - 2100	4	7	3	2	7	6	3	32	13.97%
2100 - 2400	2	5	5	5	3	4	3	27	11.79%
Unknown	0	0	0	0	0	0	0	0	0.00%
Total	40	39	29	24	39	28	30	229	100%

Year to Date Calls by Weekday

Call information, ambulance run data report, Runs per weekday



Transport Hospital

Call information, Ambulance Run Data Report

Destination	# of Runs	% of Runs
Aurora Medical Center	2	0.87%
Columbus Community Hospital	9	3.93%
Meriter Hospital	22	9.61%
St. Mary's - Madison	39	17.03%
St. Mary's - Sun Prairie	28	12.23%
University of Wisconsin Hospital & Clinics	32	13.97%
VA Medical Center	6	2.62%
Watertown Regional Medical Center	1	0.44%
No Destination	90	39.30%
Total	229	100%

Year to Date Dispatch Reasons

Call information, Ambulance Run Data

Dispatch Reason	# of Times	% of Times
Abdominal Pain	4	1.75%
Allergies (Reaction, Stings, Bites)	1	0.44%
Assault/Sexual Assault	3	1.31%
Back Pain (Non-Traumatic/Non-Recent Trauma)	1	0.44%
Breathing Problem	14	6.11%
Cardiac or Respiratory Arrest/Death	4	1.75%
Chest Pain (Non-Traumatic)	14	6.11%
Choking	1	0.44%
Convulsions/Seizure	9	3.93%
Diabetic Problems	6	2.62%
Falls	37	16.16%
Heart Problems/A.I.C.D.	2	0.87%
Heat/Cold Exposure	1	0.44%
Hemorrhage/Laceration	5	2.18%
Overdose	5	2.18%
Overdose/Poisoning (Ingestion)	1	0.44%
Psychiatric/Abnormal Behavior/Suicide Attempt	2	0.87%
Sick Person (Specific Diagnosis)	32	13.97%
Stab/Gunshot/Penetrating Trauma	1	0.44%
Standby	30	13.10%
Stroke (CVA)	1	0.44%
Traffic/Transportation Incidents	35	15.28%
Traumatic Injuries (Specific)	5	2.18%
Unconscious/Fainting (Near)	7	3.06%
Unknown Problem (Man Down)	8	3.49%
Unknown	0	0.00%
Total	229	100%

Year to Date Call Disposition

Call information, Ambulance Run Data Report

Response Disposition	# of Times	% of Times
Cancelled	28	12.23%
Dead at Scene	3	1.31%
Good Intent	1	0.44%
Patient Refused Care	11	4.80%
Standby Only, No Patient Contacts	15	6.55%
Treated and Refused Transport	16	6.99%
Treated and Released	13	5.68%
Treated, Dead at Scene	2	0.87%
Treated, Transferred Care	13	5.68%
Treated, Transported by EMS	124	54.15%
Treated, Transported by Law Enforcement	1	0.44%
Unable to Locate Patient/Scene	2	0.87%
Unknown	0	0.00%
Total	229	100%