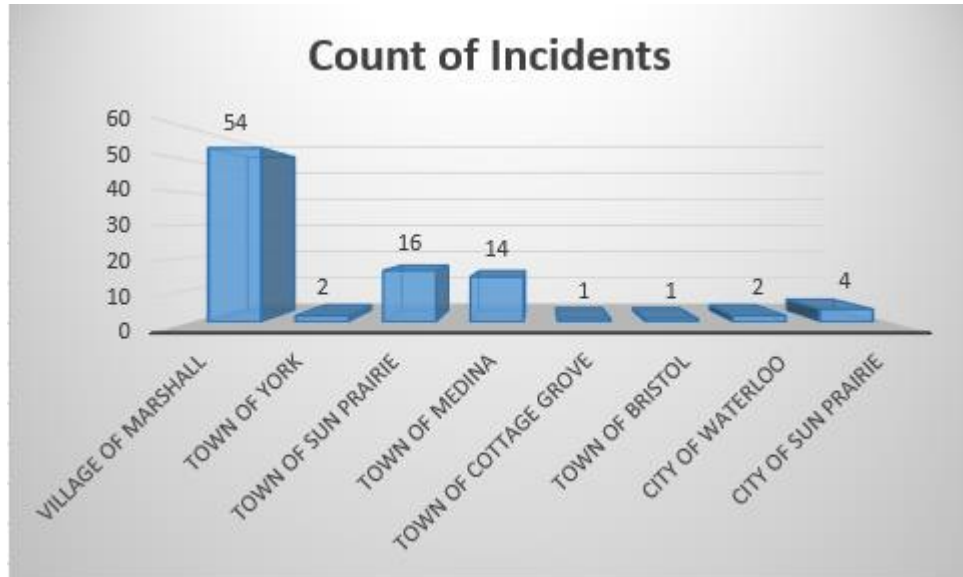
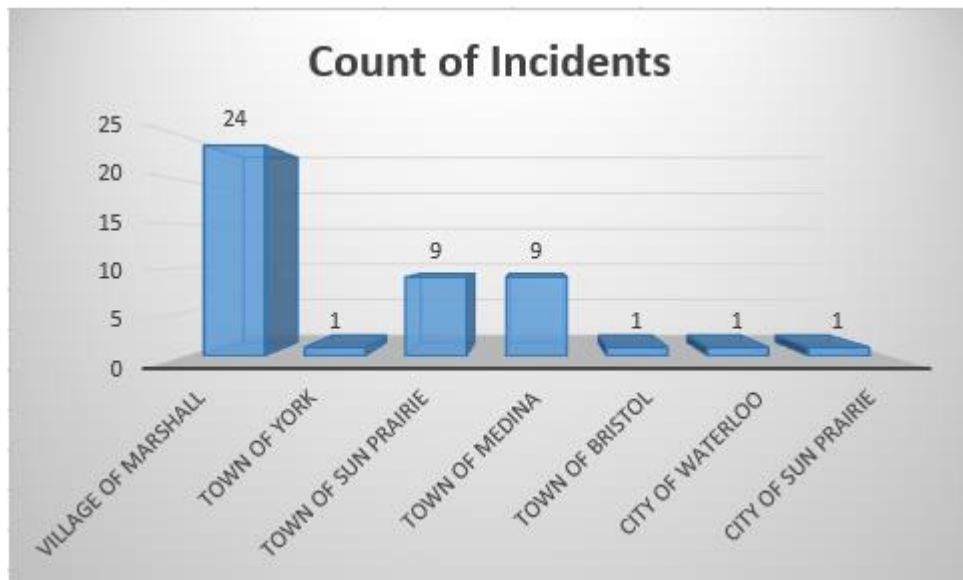


Annual Call Volume by Municipality



Monthly Call Volume by Municipality



Call Volume Year to Date (2016)

QA/QI, run reports per month

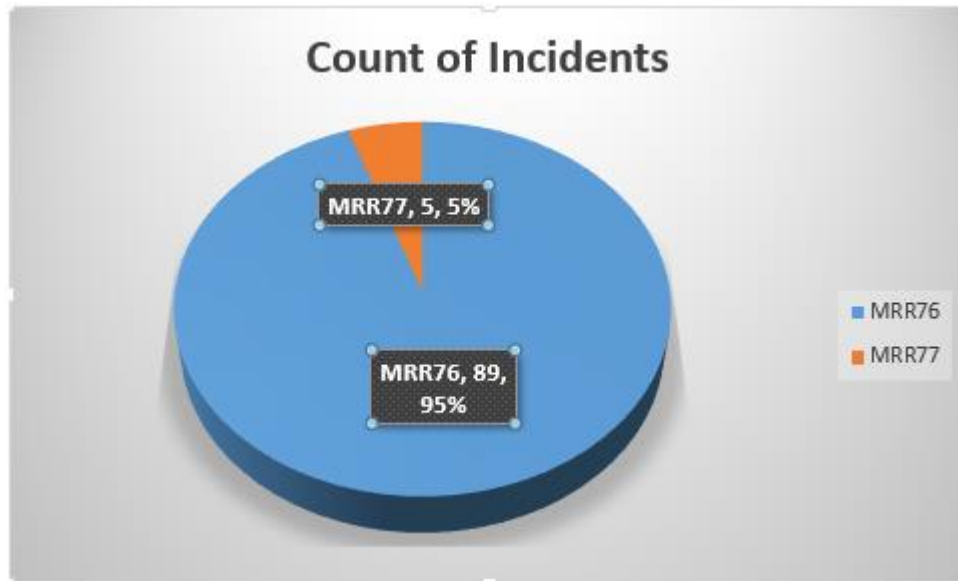
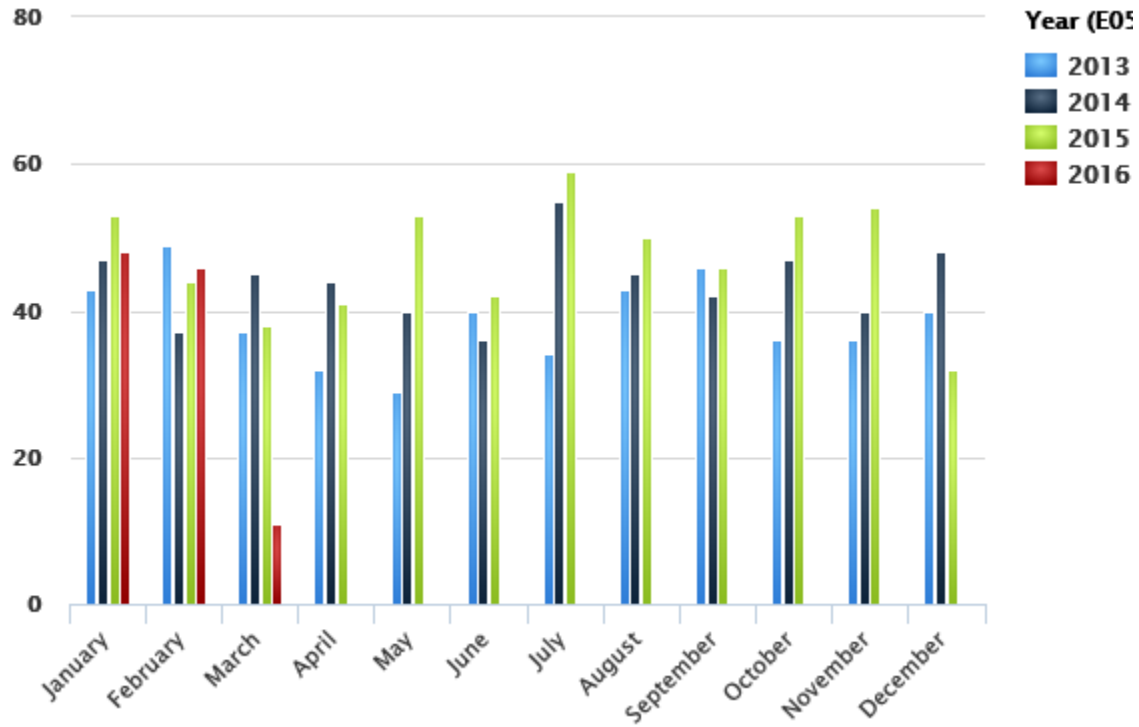
Month	# of Runs	% of Runs
January	48	45.28%
February	46	43.40%
March	12	11.32%
April	0	0.00%
May	0	0.00%
June	0	0.00%
July	0	0.00%
August	0	0.00%
September	0	0.00%
October	0	0.00%
November	0	0.00%
December	0	0.00%
Total	106	100%

Call Volume Prior Year (2015)

QA/QI, run reports per month

Month	# of Runs	% of Runs
January	53	9.38%
February	44	7.79%
March	38	6.73%
April	41	7.26%
May	53	9.38%
June	42	7.43%
July	59	10.44%
August	50	8.85%
September	46	8.14%
October	53	9.38%
November	54	9.56%
December	32	5.66%
Total	565	100%

As of 02/29/2016 we were dispatched to 3 fewer calls than this period in 2015.



The backup ambulance has responded to two calls for service in 2016. We've yet to miss a call for service in (2016) where our first ambulance was already assigned to a call.

Average Run Times for month

Call information, Ambulance Run Data Report – All calls

Enroute (Responding - Unit Notified Dispatched)			Response Time (Arrive Scene - Enroute)		
Minutes	# of Runs	% of Runs	Minutes	# of Runs	% of Runs
0 - 1	11	23.91%	0 - 5	32	69.57%
2 - 3	15	32.61%	6 - 10	10	21.74%
4 - 5	12	26.09%	11 - 15	2	4.35%
> 5	7	15.22%	> 15	1	2.17%
Unknown	1	2.17%	Unknown	1	2.17%
Total	46	100%	Total	46	100%

Scene Time (Depart Scene - Arrive Scene)			Transport Time (Arrive Hospital - Depart Scene)		
Minutes	# of Runs	% of Runs	Minutes	# of Runs	% of Runs
0 - 10	4	8.70%	0 - 5	1	2.17%
11 - 20	20	43.48%	6 - 10	3	6.52%
21 - 30	8	17.39%	11 - 15	0	0.00%
> 30	1	2.17%	> 15	24	52.17%
Unknown	13	28.26%	Unknown	18	39.13%
Total	46	100%	Total	46	100%

Average Run Times	
Enroute	00:03:15
To Scene	00:05:01
At Scene	00:17:25
To Destination	00:25:11
Back in Service	00:14:30
Total	01:05:22

Annual Average Run Times

Call information, Ambulance Run Data Report – All calls

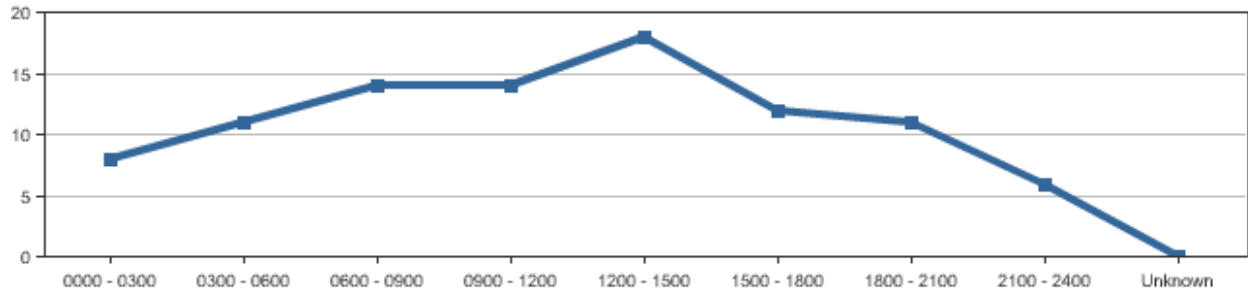
Enroute (Responding - Unit Notified Dispatched)			Response Time (Arrive Scene - Enroute)		
Minutes	# of Runs	% of Runs	Minutes	# of Runs	% of Runs
0 - 1	25	26.60%	0 - 5	66	70.21%
2 - 3	27	28.72%	6 - 10	19	20.21%
4 - 5	27	28.72%	11 - 15	4	4.26%
> 5	13	13.83%	> 15	1	1.06%
Unknown	2	2.13%	Unknown	4	4.26%
Total	94	100%	Total	94	100%

Scene Time (Depart Scene - Arrive Scene)			Transport Time (Arrive Hospital - Depart Scene)		
Minutes	# of Runs	% of Runs	Minutes	# of Runs	% of Runs
0 - 10	11	11.70%	0 - 5	1	1.06%
11 - 20	41	43.62%	6 - 10	5	5.32%
21 - 30	9	9.57%	11 - 15	1	1.06%
> 30	5	5.32%	> 15	51	54.26%
Unknown	28	29.79%	Unknown	36	38.30%
Total	94	100%	Total	94	100%

Average Run Times	
Enroute	00:03:10
To Scene	00:04:42
At Scene	00:18:05
To Destination	00:25:12
Back in Service	00:16:01
Total	01:07:10

Year to Date Call Volume by Hour of Day

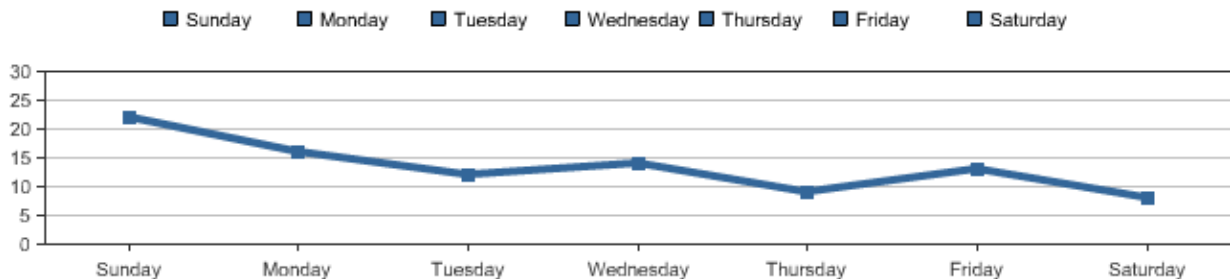
Call Information, Ambulance Run Data Report



Time Period	Sunday	Monday	Tuesday	Wednesday	Thursday	Friday	Saturday	Total	Percentage
0000 - 0300	1	0	1	1	1	2	2	8	8.51%
0300 - 0600	1	3	2	2	1	2	0	11	11.70%
0600 - 0900	2	1	4	3	3	1	0	14	14.89%
0900 - 1200	4	2	2	4	0	2	0	14	14.89%
1200 - 1500	8	1	2	0	3	2	2	18	19.15%
1500 - 1800	2	4	1	2	0	1	2	12	12.77%
1800 - 2100	4	2	0	2	0	2	1	11	11.70%
2100 - 2400	0	3	0	0	1	1	1	6	6.38%
Unknown	0	0	0	0	0	0	0	0	0.00%
Total	22	16	12	14	9	13	8	94	100%

Year to Date Calls by Weekday

Call information, ambulance run data report, Runs per weekday



Transport Hospital

Call information, Ambulance Run Data

Destination	# of Runs	% of Runs
Columbus Community Hospital	5	5.32%
Meriter Hospital	4	4.26%
St. Mary's - Madison	19	20.21%
St. Mary's - Sun Prairie	10	10.64%
Stoughton Hospital	1	1.06%
Univ of Wis Hospital & Clinics	10	10.64%
UW Hospital - East	7	7.45%
VA Medical Center	1	1.06%
No Destination	37	39.36%
Total	94	100%

Year to Date Dispatch Reasons

Call information, Ambulance Run Data

Dispatch Reason	# of Times	% of Times
Abdominal Pain	1	1.06%
Assault/Sexual Assault	1	1.06%
Breathing Problem	7	7.45%
Cardiac or Respiratory Arrest/Death	2	2.13%
Chest Pain (Non-Traumatic)	5	5.32%
Convulsions/Seizure	1	1.06%
Diabetic Problems	1	1.06%
Falls	20	21.28%
Headache	1	1.06%
Heart Problems/A.I.C.D.	1	1.06%
Hemorrhage/Laceration	3	3.19%
Overdose/Poisoning (Ingestion)	1	1.06%
Psychiatric/Abnormal Behavior/Suicide Attempt	1	1.06%
Sick Person (Specific Diagnosis)	13	13.83%
Standby	9	9.57%
Stroke (CVA)	1	1.06%
Traffic/Transportation Incidents	14	14.89%
Traumatic Injuries (Specific)	3	3.19%
Unconscious/Fainting (Near)	6	6.38%
Unknown Problem (Man Down)	3	3.19%
Unknown	0	0.00%
Total	94	100%

Year to Date Call Disposition

Call information, Ambulance Run Data Report

Response Disposition	# of Times	% of Times
Cancelled	5	5.32%
Dead at Scene	1	1.06%
Patient Refused Care	12	12.77%
Standby Only, No Patient Contacts	5	5.32%
Treated and Refused Transport	12	12.77%
Treated and Released	2	2.13%
Treated, Transferred Care	1	1.06%
Treated, Transported by EMS	56	59.57%
Unknown	0	0.00%
Total	94	100%