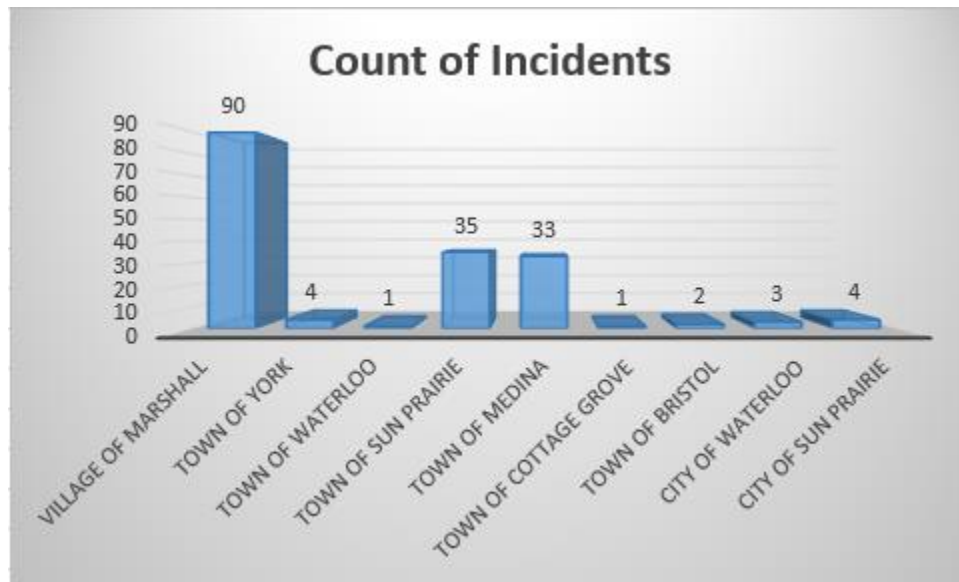
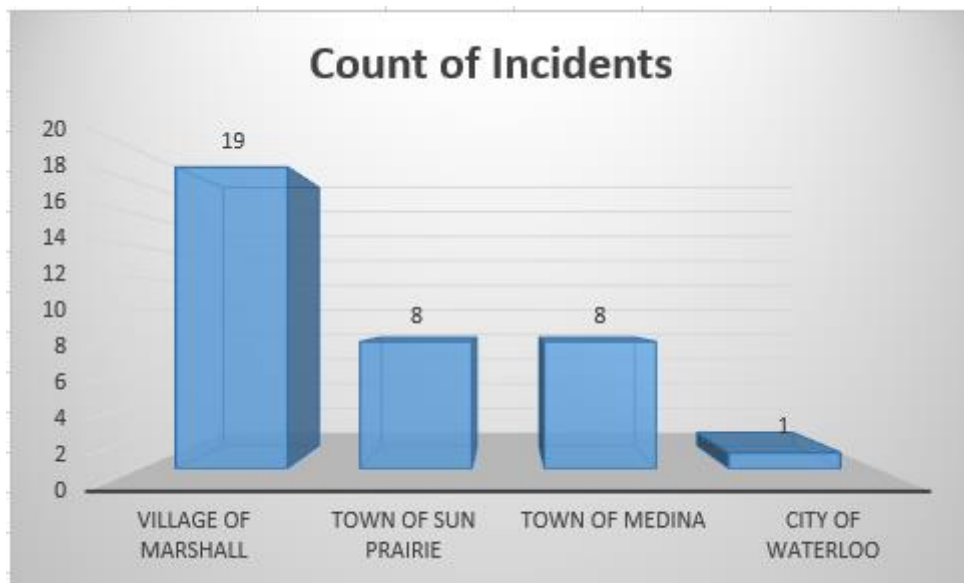


Marshall Area EMS Director's Report May 2016

Annual Call Volume by Municipality



Monthly Call Volume by Municipality



Call Volume Year to Date (2016)

QA/QI, run reports per month

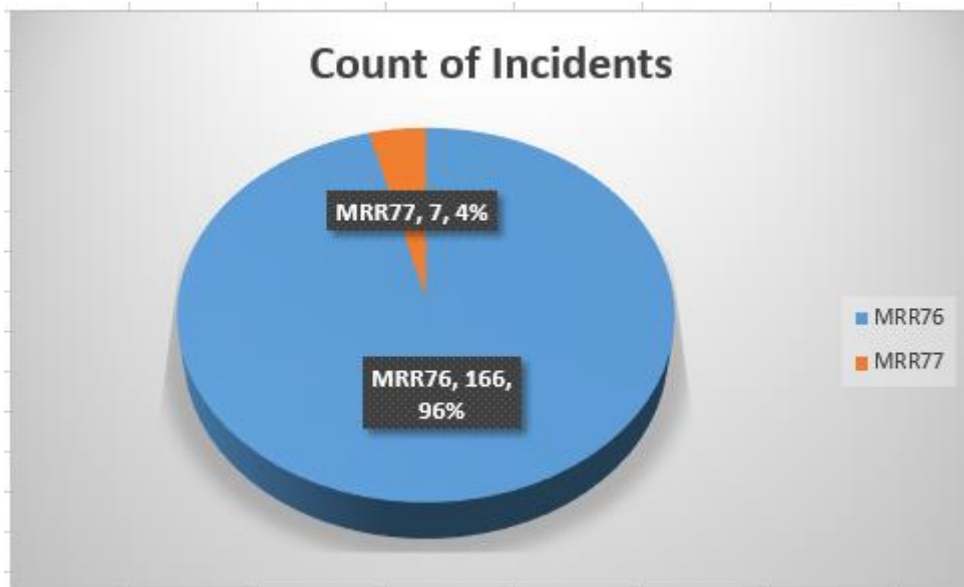
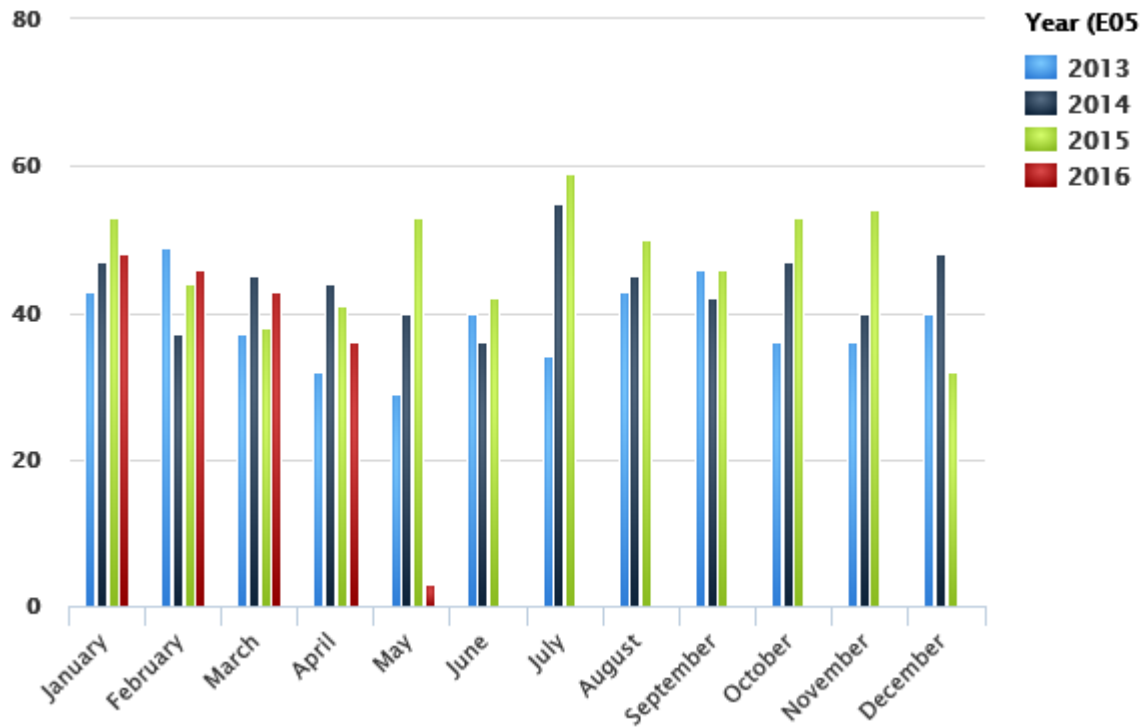
Month	# of Runs	% of Runs
January	48	27.27%
February	46	26.14%
March	43	24.43%
April	36	20.45%
May	3	1.70%
June	0	0.00%
July	0	0.00%
August	0	0.00%
September	0	0.00%
October	0	0.00%
November	0	0.00%
December	0	0.00%
Total	176	100%

Call Volume Prior Year (2015)

QA/QI, run reports per month

Month	# of Runs	% of Runs
January	53	9.38%
February	44	7.79%
March	38	6.73%
April	41	7.26%
May	53	9.38%
June	42	7.43%
July	59	10.44%
August	50	8.85%
September	46	8.14%
October	53	9.38%
November	54	9.56%
December	32	5.66%
Total	565	100%

As of 04/30/2016 we were dispatched to 3 less calls than this period in 2015.



The backup ambulance has responded to three calls for service in 2016. We've missed four calls for service in (2016) where our first ambulance was already assigned to a call.

Average Run Times for month

Call information, Ambulance Run Data Report – All calls

Enroute (Responding - Unit Notified Dispatched)			Response Time (Arrive Scene - Enroute)		
Minutes	# of Runs	% of Runs	Minutes	# of Runs	% of Runs
0 - 1	5	13.89%	0 - 5	22	61.11%
2 - 3	7	19.44%	6 - 10	5	13.89%
4 - 5	19	52.78%	11 - 15	7	19.44%
> 5	3	8.33%	> 15	0	0.00%
Unknown	2	5.56%	Unknown	2	5.56%
Total	36	100%	Total	36	100%

Scene Time (Depart Scene - Arrive Scene)			Transport Time (Arrive Hospital - Depart Scene)		
Minutes	# of Runs	% of Runs	Minutes	# of Runs	% of Runs
0 - 10	6	16.67%	0 - 5	0	0.00%
11 - 20	11	30.56%	6 - 10	0	0.00%
21 - 30	1	2.78%	11 - 15	3	8.33%
> 30	2	5.56%	> 15	17	47.22%
Unknown	16	44.44%	Unknown	16	44.44%
Total	36	100%	Total	36	100%

Average Run Times	
Enroute	00:03:42
To Scene	00:05:12
At Scene	00:18:40
To Destination	00:25:51
Back in Service	00:15:42
Total	01:09:07

Annual Average Run Times

Call information, Ambulance Run Data Report – All calls

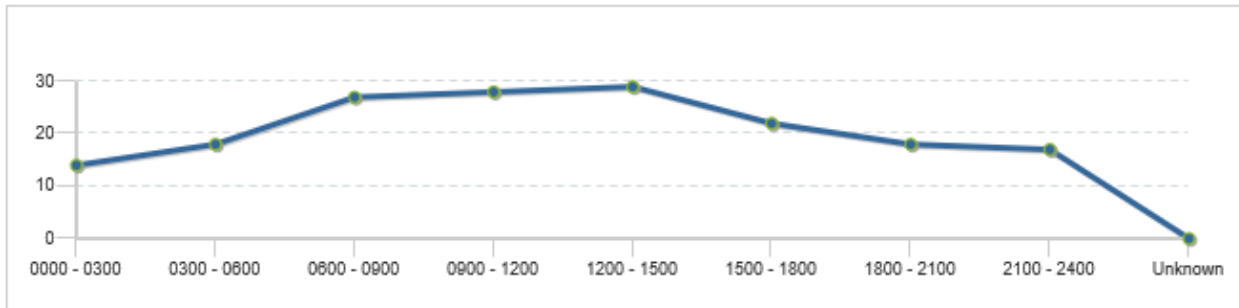
Enroute (Responding - Unit Notified Dispatched)			Response Time (Arrive Scene - Enroute)		
Minutes	# of Runs	% of Runs	Minutes	# of Runs	% of Runs
0 - 1	38	21.97%	0 - 5	110	63.58%
2 - 3	45	26.01%	6 - 10	35	20.23%
4 - 5	62	35.84%	11 - 15	18	10.40%
> 5	22	12.72%	> 15	1	0.58%
Unknown	6	3.47%	Unknown	9	5.20%
Total	173	100%	Total	173	100%

Scene Time (Depart Scene - Arrive Scene)			Transport Time (Arrive Hospital - Depart Scene)		
Minutes	# of Runs	% of Runs	Minutes	# of Runs	% of Runs
0 - 10	31	17.92%	0 - 5	1	0.58%
11 - 20	63	36.42%	6 - 10	5	2.89%
21 - 30	18	10.40%	11 - 15	4	2.31%
> 30	7	4.05%	> 15	101	58.38%
Unknown	54	31.21%	Unknown	62	35.84%
Total	173	100%	Total	173	100%

Average Run Times	
Enroute	00:03:25
To Scene	00:05:07
At Scene	00:16:53
To Destination	00:26:27
Back in Service	00:16:09
Total	01:08:01

Year to Date Call Volume by Hour of Day

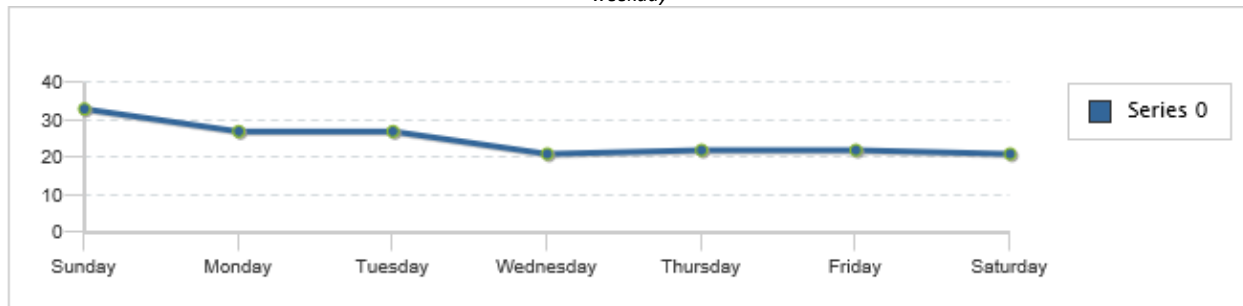
Call Information, Ambulance Run Data Report



Time Period	Sunday	Monday	Tuesday	Wednesday	Thursday	Friday	Saturday	Total	Percentage
0000 - 0300	2	1	3	2	1	3	2	14	8.09%
0300 - 0600	3	5	2	3	1	2	2	18	10.40%
0600 - 0900	4	2	7	4	7	2	1	27	15.61%
0900 - 1200	4	5	7	5	2	3	2	28	16.18%
1200 - 1500	8	3	3	1	6	5	3	29	16.76%
1500 - 1800	4	6	2	2	2	1	5	22	12.72%
1800 - 2100	7	2	1	4	0	3	1	18	10.40%
2100 - 2400	1	3	2	0	3	3	5	17	9.83%
Unknown	0	0	0	0	0	0	0	0	0.00%
Total	33	27	27	21	22	22	21	173	100%

Year to Date Calls by Weekday

Call information, ambulance run data report, Runs per weekday



Transport Hospital

Call information, Ambulance Run Data

Destination	# of Runs	% of Runs
Columbus Community Hospital	7	4.05%
Meriter Hospital	15	8.67%
St. Mary's - Madison	31	17.92%
St. Mary's - Sun Prairie	13	7.51%
Stoughton Hospital	1	0.58%
Univ of Wis Hospital & Clinics	29	16.76%
UW Hospital - East	9	5.20%
VA Medical Center	3	1.73%
Watertown Regional Medical Center	1	0.58%
No Destination	64	36.99%
Total	173	100%

Year to Date Dispatch Reasons

Call information, Ambulance Run Data

Dispatch Reason	# of Times	% of Times
Abdominal Pain	2	1.16%
Allergies (Reaction, Stings, Bites)	1	0.58%
Assault/Sexual Assault	5	2.89%
Back Pain (Non-Traumatic/Non-Recent Trauma)	2	1.16%
Breathing Problem	14	8.09%
Cardiac or Respiratory Arrest/Death	2	1.16%
Chest Pain (Non-Traumatic)	8	4.62%
Convulsions/Seizure	6	3.47%
Diabetic Problems	1	0.58%
Falls	27	15.61%
Headache	3	1.73%
Heart Problems/A.I.C.D.	3	1.73%
Hemorrhage/Laceration	4	2.31%
Overdose	2	1.16%
Overdose/Poisoning (Ingestion)	1	0.58%
Psychiatric/Abnormal Behavior/Suicide Attempt	2	1.16%
Sick Person (Specific Diagnosis)	23	13.29%
Standby	18	10.40%
Stroke (CVA)	2	1.16%
Traffic/Transportation Incidents	29	16.76%
Traumatic Injuries (Specific)	5	2.89%
Unconscious/Fainting (Near)	8	4.62%
Unknown Problem (Man Down)	5	2.89%
Unknown	0	0.00%
Total	173	100%

Year to Date Call Disposition

Call information, Ambulance Run Data Report

Response Disposition	# of Times	% of Times
Cancelled	11	6.36%
Dead at Scene	1	0.58%
Good Intent	1	0.58%
Patient Refused Care	16	9.25%
Standby Only, No Patient Contacts	10	5.78%
Treated and Refused Transport	25	14.45%
Treated and Released	2	1.16%
Treated, Transferred Care	3	1.73%
Treated, Transported by EMS	103	59.54%
Treated, Transported by Law Enforcement	1	0.58%
Unknown	0	0.00%
Total	173	100%